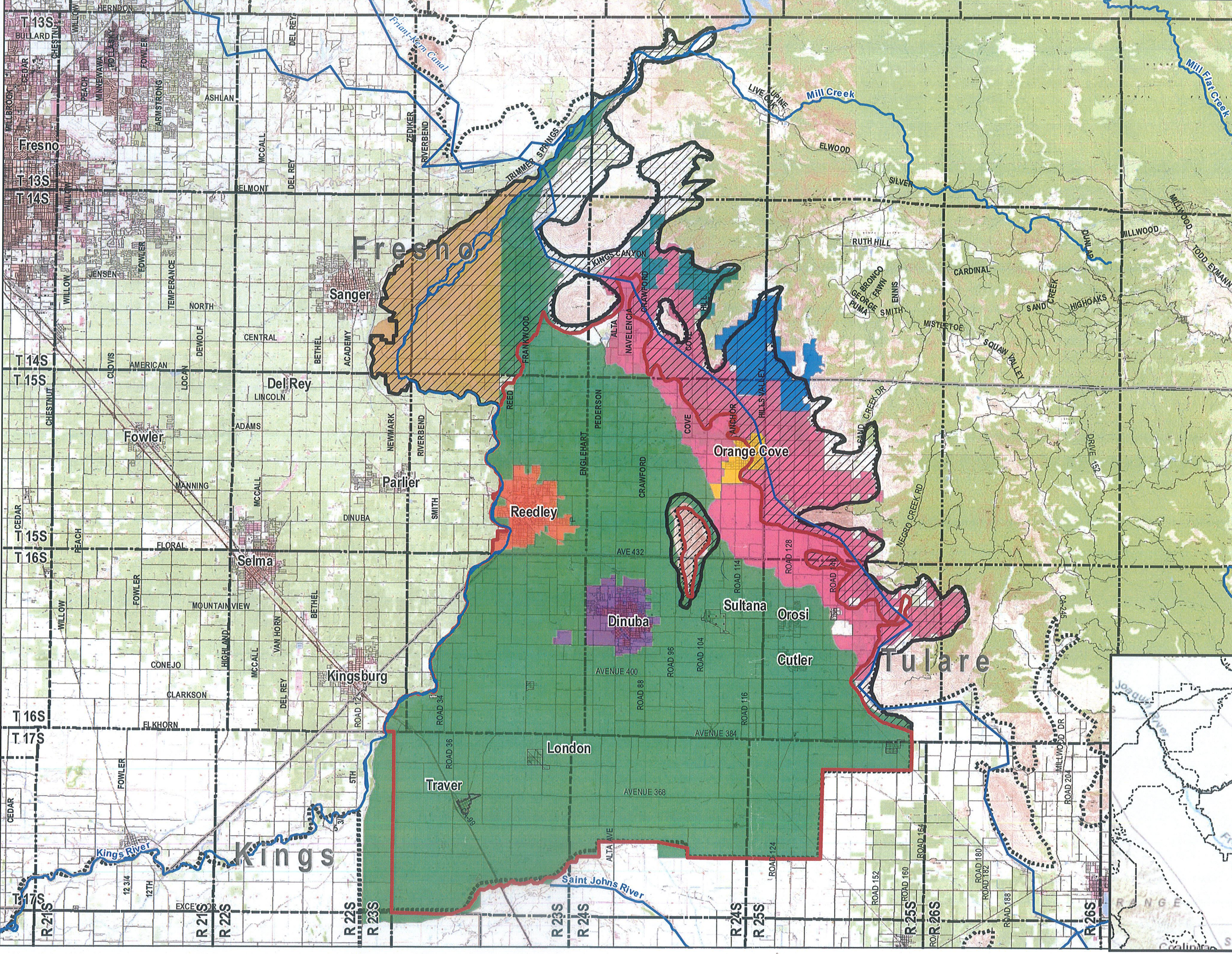


Kings River East Groundwater Sustainable Agency

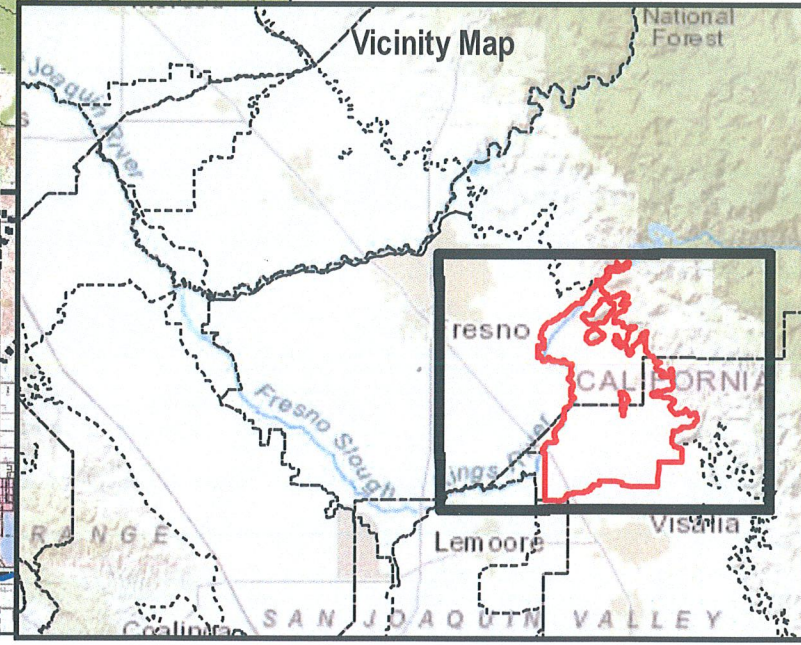


Legend

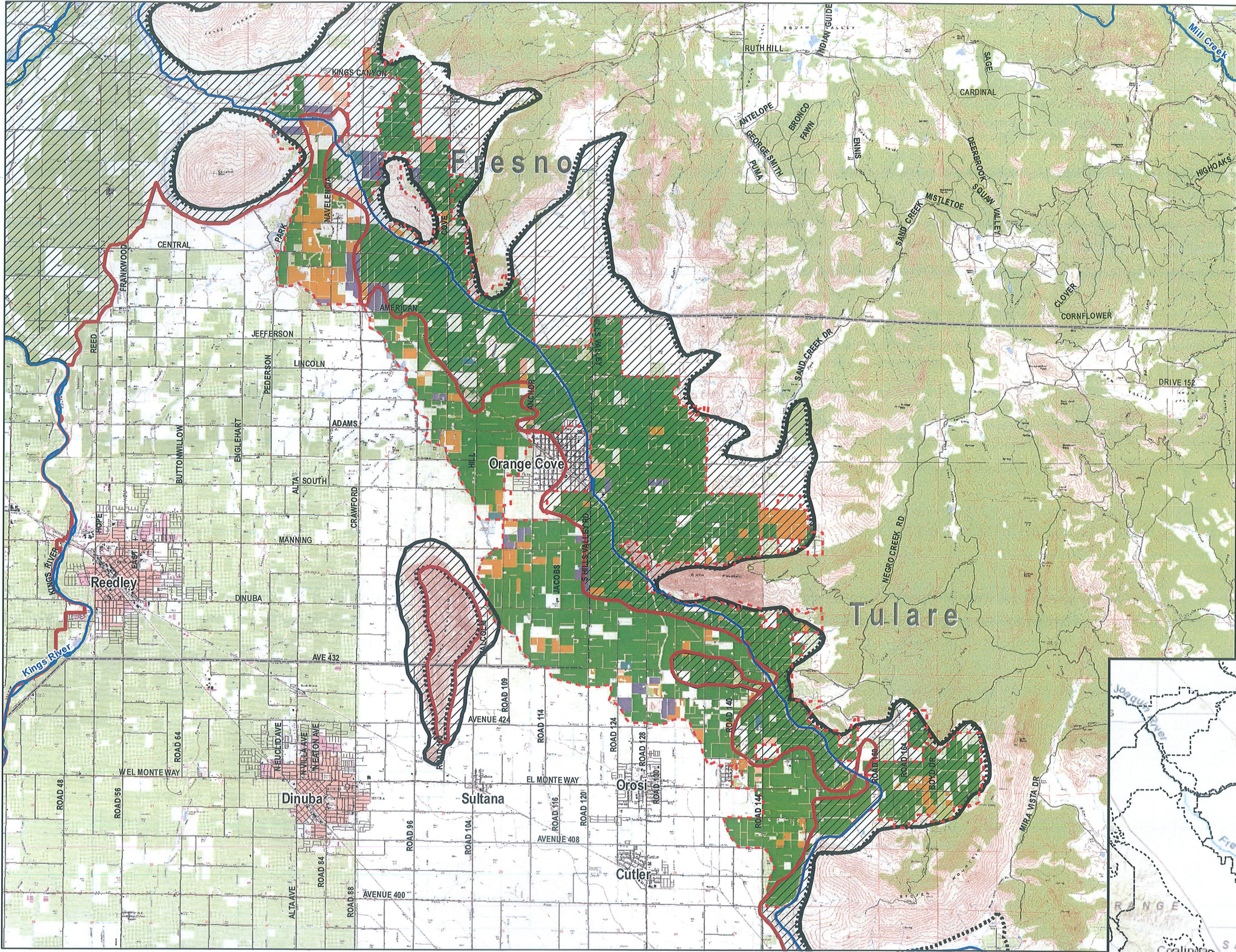
- County Boundaries
- Groundwater Basins
- Kings River East Groundwater Sustainable Agency**
 - GSA (135,723 Ac.)
 - De minimis (59,068.36 Ac.)
- Townships
- Public Agencies**
 - City of Dinuba (3,385 Ac.)
 - City of Orange Cove (1,150 Ac.)
 - City of Reedley (3,070 Ac.)
 - Tri-Valley Water District (2,034 Ac.)
 - Hills Valley Irrigation District (3,166 Ac.)
 - Kings River Water District (13,620 Ac.)
 - Orange Cove Irrigation District (28,702 Ac.)
 - Alta Irrigation District (128,142 Ac.)
- Overlap**
 - Delft Colony Water
 - East Orosi CSD
 - Fairway Mutual Water Company
 - George Cox Water System
 - London Community Services District
 - Seville Water Company
 - Sultana Community Services District
 - Traver Water
- Friant-Kern Canal
- Waterways
- Roads

References:
 DWR Water Management Planning Tool
 DWR GSA Map Viewer
 USDA 2016 Cropscape Data layer

1 in = 3 mi



**Kings River East
Groundwater Sustainable Agency
Orange Cove Irrigation District
DWR 2014 Land Use**



Legend

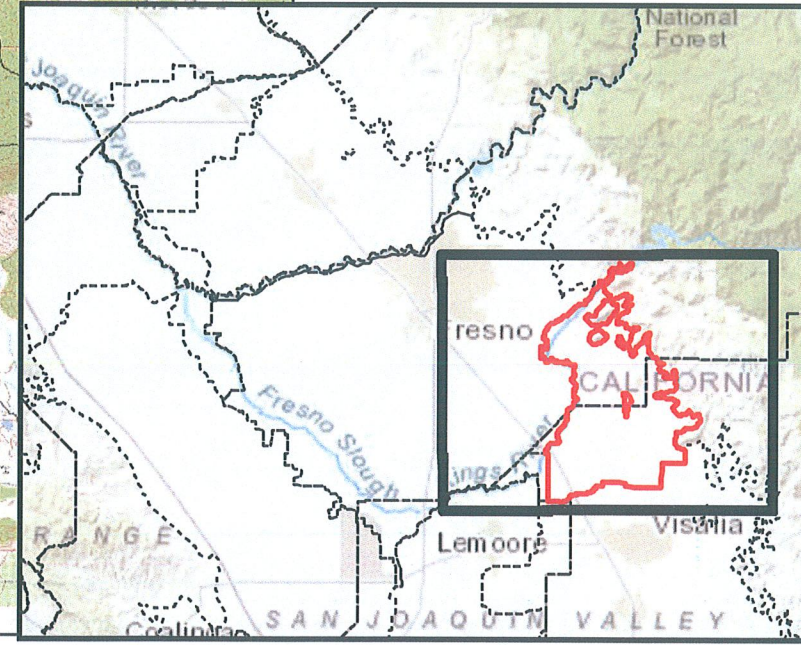
- County Boundaries
- Groundwater Basins
- Kings River East GSA**
- GSA (136,000 Ac.)
- No Significant Impact (55,380 Ac.)
- Orange Cove Irrigation District
- Land Use**
- P | PASTURE (316.79 Ac.)
- G | GRAIN AND HAY CROPS (262.03)
- T | TRUCK NURSERY AND BERRY CROPS (113.71 Ac.)
- F | FIELD CROPS (3.54 Ac.)
- C | CITRUS AND SUBTROPICAL (19,016.21 Ac.)
- D | DECIDUOUS FRUITS AND NUTS (1,676.03 Ac.)
- V | VINEYARD (797.93 Ac.)
- Y | YOUNG PERENNIAL (94.60)
- I | IDLE (2,114.72 Ac.)
- U | URBAN (0 Ac.)
- Frait-Kern Canal
- Waterways
- Roads

DWR 2014 - OCID Stats
 Total Acres = 24,108 Ac.
 Total Irrigated Acres = 21,993 Ac.
 Urban/ developed Acres: 0 Ac.
 Native/Fallow Acres: 2,114.72 Ac.

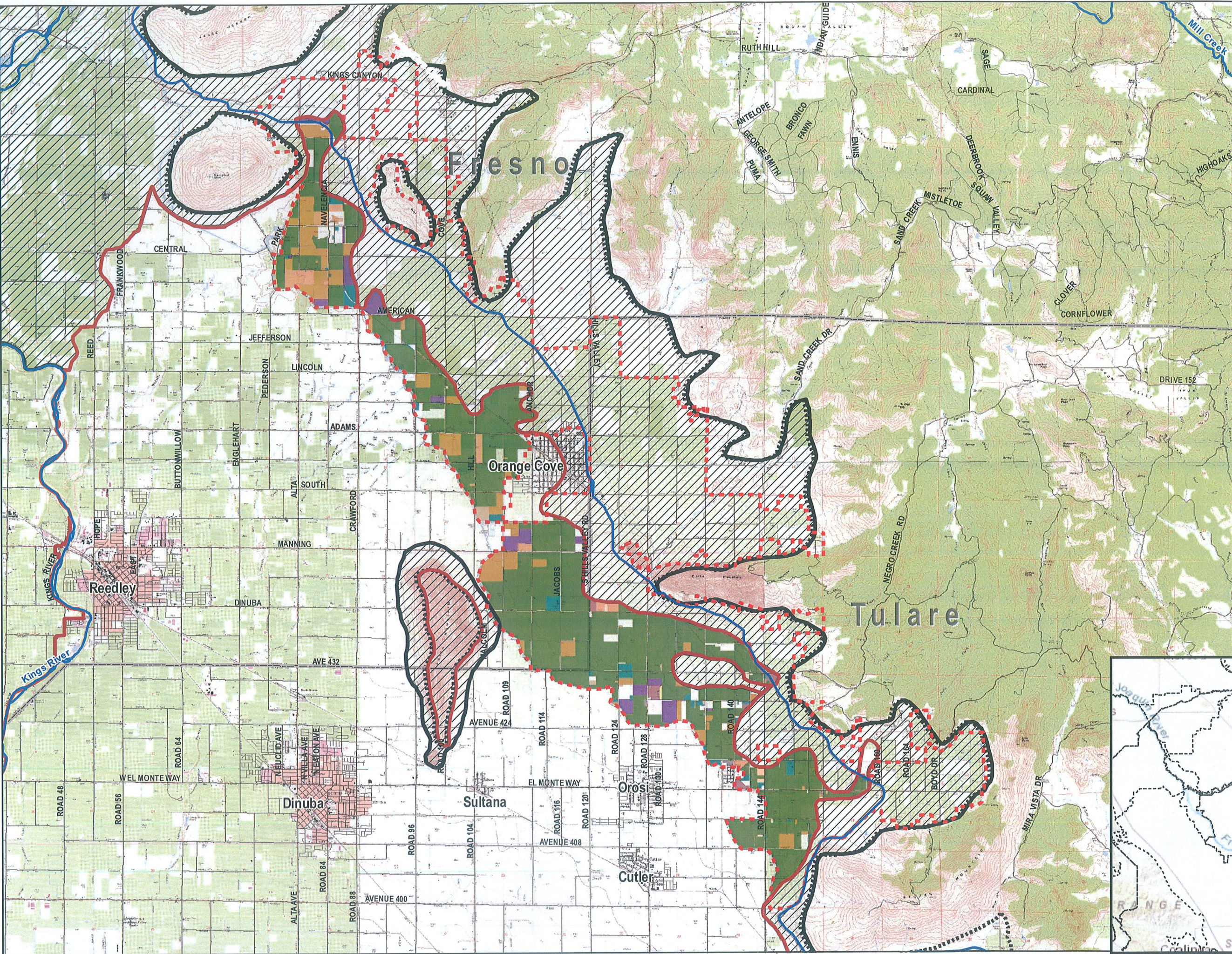
References:
 DWR GSA Map Viewer
 DWR Land Use Surveys



1 in = 1.5 mi



Kings River East Groundwater Sustainable Agency Orange Cove Irrigation District Prop 26 Land Use

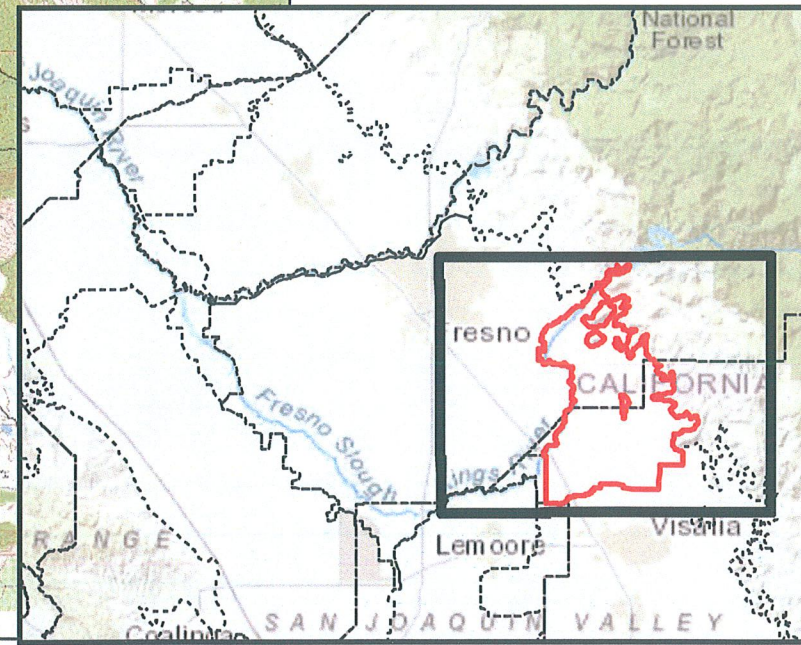


Legend

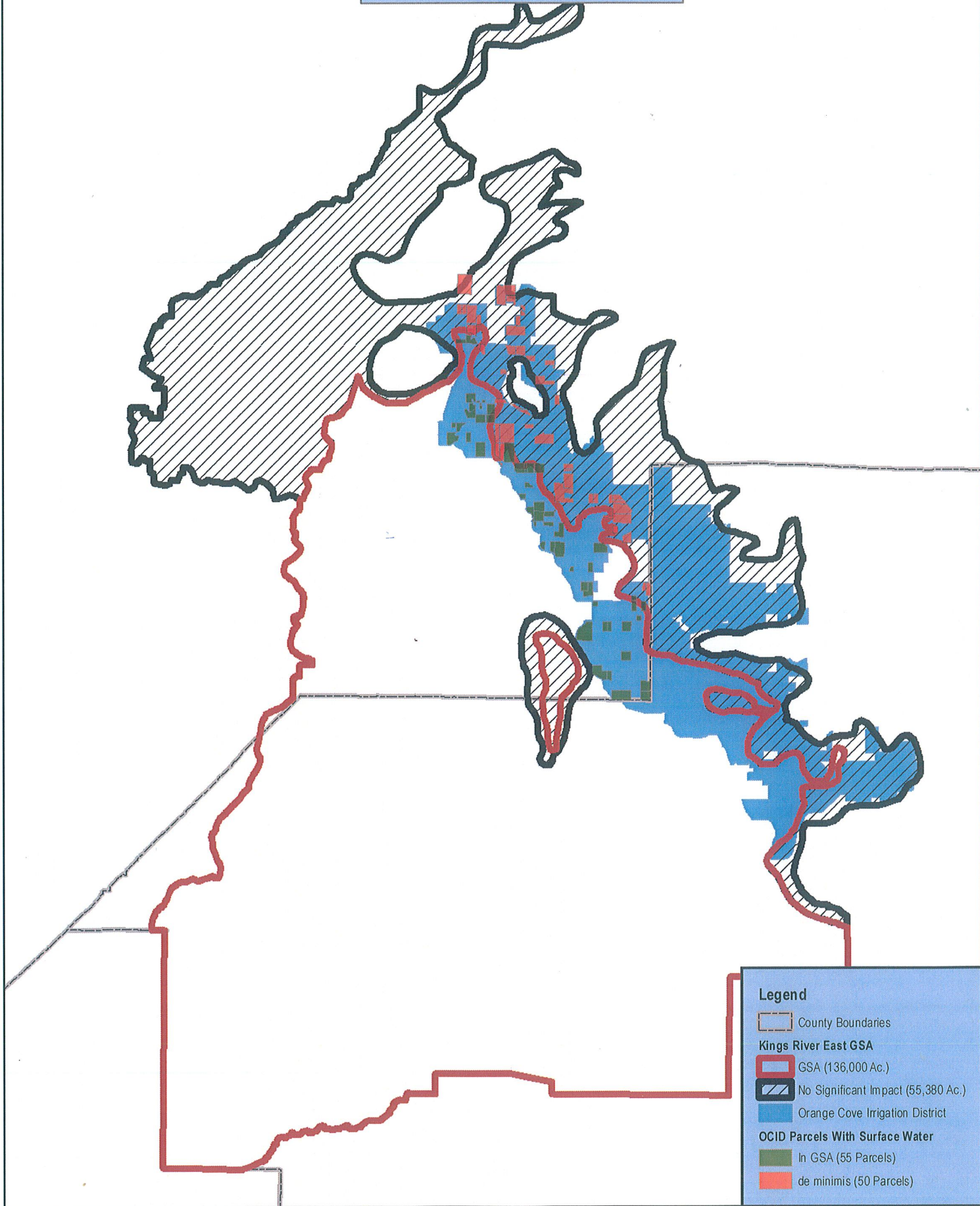
- County Boundaries
 - Groundwater Basins
 - Kings River East GSA**
 - GSA (136,000 Ac.)
 - No Significant Impact (55,380 Ac.)
 - Orange Cove Irrigation District
 - Prop 26 Land Use**
 - Alfalfa (0 Ac.)
 - Citrus & Subtropical (8,641.60 Ac.)
 - Deciduous Fruits and Nuts (1,236.16 Ac.)
 - Almonds (299.84 Ac.)
 - Pistachios (18.41 Ac.)
 - Walnuts (43.77 Ac.)
 - Field Crops (14 Ac.)
 - Grain & Hay Crops (20.82 Ac.)
 - Idle (808.79 Ac.)
 - Pasture (384.52 Ac.)
 - Truck, Nursery, and Berry Crops (82.10 Ac.)
 - Urban (86.68 Ac.)
 - Vineyard (470.95 Ac.)
 - Faint-Kern Canal
 - Waterways
 - Roads
- DWR 2014 - OCID Stats**
 Total Acres = 24,108 Ac.
 Total Irrigated Acres = 21,993 Ac.
 Urban/ developed Acres: 0 Ac.
 Native/Fallow Acres: 2,114.72 Ac.
- References:**
 DWR GSA Map Viewer
 DWR Land Use Surveys



1 in = 1.52 mi



ORANGE COVE IRRIGATION DISTRICT
Surface Water Data Exhibit



- Legend**
- County Boundaries
 - Kings River East GSA**
 - GSA (136,000 Ac.)
 - No Significant Impact (55,380 Ac.)
 - Orange Cove Irrigation District
 - OCID Parcels With Surface Water**
 - In GSA (55 Parcels)
 - de minimis (50 Parcels)